



All prices MSRP list. Call for discounts.

LIGHT TOWER PRICING GUIDE

Management • Critical Power Systems • Generator Procurement • Facility Management • Emergency Services • Contract Management • Forward Deployment • Infrastructure Planning • Leasing Facilities • Engineering Services • Project Consultation • Advanced Site Preparation • Full Service Integration • Management Systems • Disaster Response • Maintenance Contracts • Equipment Management • Engineering Services • Financial Services

Power to the worldwide marketplace...



AL4000

Light Tower

LIGHT TOWER
AL4000



Light Tower AL4000

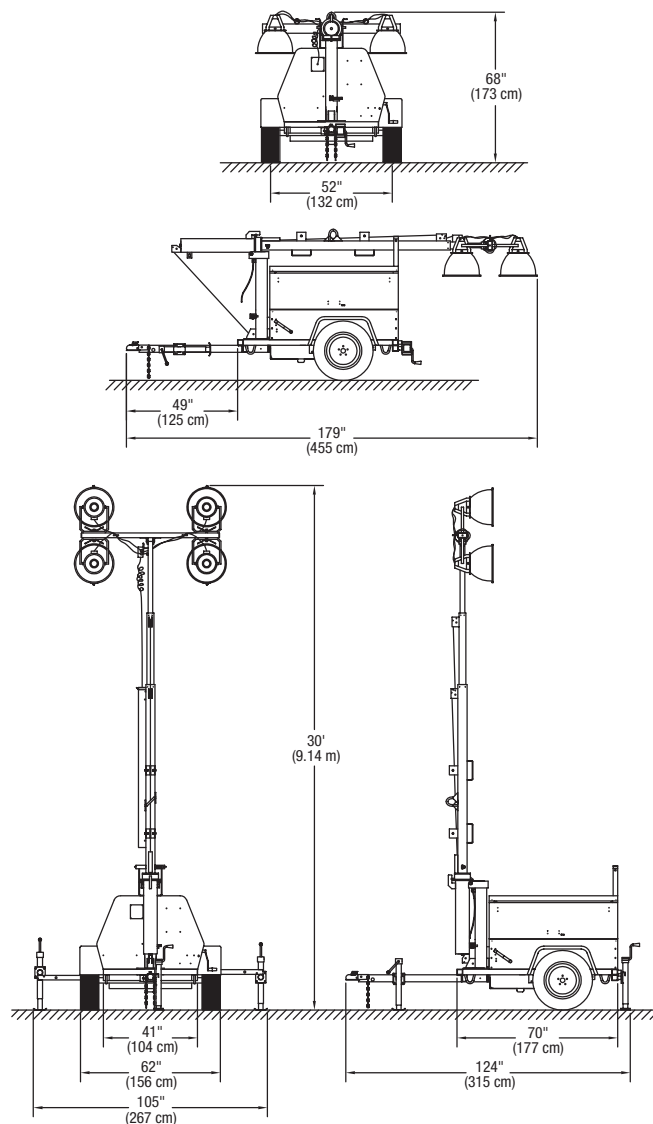
Features

- Full sized, 30 ft (9.1 m) extended height floodlight tower illuminates 7-1/2 acres.
- Galvanized tower is 360° rotatable for easy aiming from the ground.
- Winch handle ergonomically positioned for easy raising and lowering. Winch drum is inside cabinet. Electric winch available.
- Light fixtures mount securely on mast for travel or can be left on crossarm.
- Pallet pockets and lifting eye make unit easier to load and unload.
- Plug-in ballasts are installed in galvanized steel boxes.
- Light fixtures plug into weatherproof receptacle box with UL and CSA approved connectors.
- Retractable power cord automatically recoils into protective sleeve to prevent damage when raising, lowering and moving tower.
- Control panel located inside cabinet, protected from the elements.

Specifications

Lamps	Metal halide 4 x 1,000 W
Generator	Brushless 60 Hz, 6.0 kW
Engine	Kubota diesel 13.6 hp
Fuel capacity	30 gal (114 L)
Wheel size	15 in (38 cm)
Axle rating	3,500 lbs (1,588 kg)
Tongue weight travel position	100 lbs (45 kg)
Total weight no fuel	2,050 lbs (930 kg)

Dimensions



Genie Industries, Inc.

A Terex company

18340 NE 76th Street
PO Box 97030
Redmond, WA 98073-9730

For more information, product demonstration, or details on purchase, lease and rental plans, please contact your local Genie Distributor.



TEREX®

Pricing Effective September 1, 2008 Light Towers AL4000

<u>Standard Features</u>	<u>Model</u>	<u>List Price</u>
Chassis	AL4000 Heavy-duty	\$11,255
60 Hz, 6 kW generator	Options	
13.6 hp Kubota diesel engine	Kubota diesel water-cooled, 13.6 hp/8.0 kW generator set	\$1,210
D1105 water cooled	Perkins / CAT diesel water-cooled, 14.3 hp/6.0 kW generator set	\$1,670
Hand winch operated 30 ft.	Combination ring and ball hitch	\$160
telescoping galvanized tower	Ring hitch, 2.5 in.	\$65
6 kW generator set	DOT approved run, stop turn lights, 4 pole plug	\$140
Low oil pressure and high temperature	12V dome light with switch	\$65
engine safety shut down	7 pole connector for light package	\$35
One 30A/240V T/L receptacle	50 gal fuel capacity	\$575
One GFI protected 20A/120V duplex receptacle	Extra GFI duplex receptacle with breaker	\$90
30 gal fuel capacity	Electric trailer brakes	\$500
Pneumatic gas lift springs on doors	Hydraulic surge brakes/ring hitch	\$1,030
P205/75B15 tires	Hydraulic surge brakes/ball hitch	\$990
Three 3,000 lbs plated screw jacks	Electric 12V winch in lieu of manual winch	\$880
3,500 lbs Heavy-duty axle	Export racking/preparation	\$515
Plug-in ballasts	Export crating/preparation	\$735
2 in. ball hitch	700 CCA battery	\$95
Tower	Fuel/water separator-filter	\$170
Four 1000W metal halide lights	Low temperature coolant mixture (-40° F)	\$35
round, spun steel axial mounted	Engine block heater for Kubota D905 and D1105	\$65
Retractable coiled power cord	Battery heater blanket	\$130
Quick disconnect fixtures	Automatic start/stop - photocell or timer **	\$1,180
	6 pole connector for light package	\$35
	4 horizontally mounted lights, cast aluminum square housing	N/C
	Automatic air shutdown**	\$1,830
	Fuel/water separator with fuel line heater	\$395
	50 hz, 7 kW generator Kubota engine	\$525
	Custom paint color - call for quote*	POR

*Special paint available - paint spec needed for non-standard colors

*Other lighting types available

** Not available with extra GFI duplex receptacle option



Light Towers USA - A Division of Turnkey Electric LLC

www.lighttowers.net | www.turnkeyelectric.com USA: 1-800-939-7480 Sales: 1-815-429-3254